

## BRIEF INTERPRETATION

According to the brief, due to current pandemic crises of COVID-19 the need of area used for making the patients isolate known as quarantine centres. such centre are required for the larger no. of people. we are asked to design such centres with all needed facilities with proper venentilation.

Ventilation is one of the import aspect of such centres and it can be achived by proper arrangement of opening in all areas. the form should also be like it can be achived easily with proper circula-tion area. circulation is also another important aspect for the such centres. POST - PANDEMIC use is another import feature of successful quarantine centre.

## INTRODUCTION

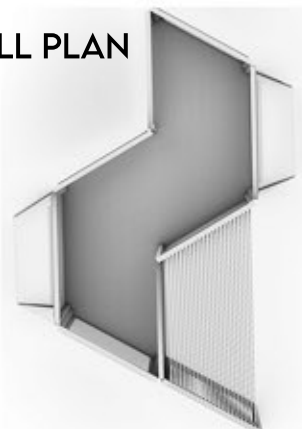
Coming to our Design... We have taken city out-shirts for the setup of our QUARANTINE CENTRE. The design start with the with a HEXAGON.

The site for the design is at the outskirts of the city for the better connectivity to the transportation assets follows



WE FOCUSED MORE ON THE UNIT FIRST FOR THE BETTER CIRCULATION , INSURING BETTER THERMAL COMFORT .

### CELL PLAN



CELL ISOMETRIC VIEW

## TERM SOCIAL BUBBLING

The term social Bubbling was first coined in New Zealand for the system of daily meeting of people to the specific extent decreasing the spread and the community transmission of Covid-19



Tested for 14 days



segregating in groups

## CLUSTER

After fixing the single isolation unit, now our focus was to arrange them in such a way, so that the should be isolated but yet be unite. and also insured that the ventilation should be more, keeping in mind the pandemic situation

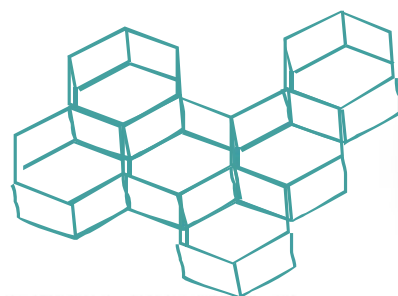


CLUSTER PLAN

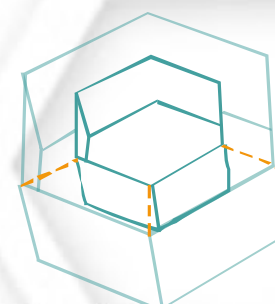
### CLUSTER ISOMETRIC VIEW



### WHY HEXAGON ?



flexible integration



visually large space



VIEW THROUGH PATHWAY

## CONCEPT

“SOCIAL BUBBLING MORE EFFECTIVE THAN SOCIAL DISTANCING IN CONTROLLING COVID-19 SPREAD”, OXFORD STUDY SAYS.

Keeping this in focus the design revolves around the Social Bubbling of the symtomised and non symtomised individuals from the COV-ID-19 virus, following the 3 basic strategies are as follows :-



Contact with similar people.

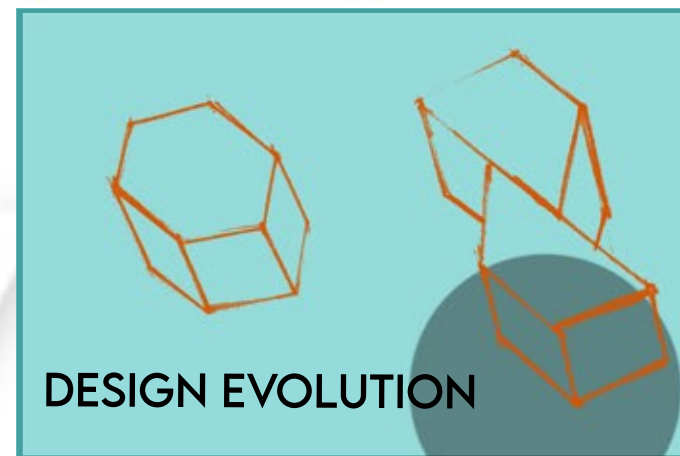


Healing psychological illness



Strengthening contact in communities.

The basic unit for this proposed design is Hexagon and its de-rived forms.



DESIGN EVOLUTION

The whole Design appreciates the system for Social Bubbling, more effective than social distancing. The from for a single unit is taken pulled out of 'Hexagon'.



IT'S <sup>not</sup> ABOUT SOCIAL DISTANCING  
ABOUT PHYSICAL DISTANCING

SOCIAL BUBBLING

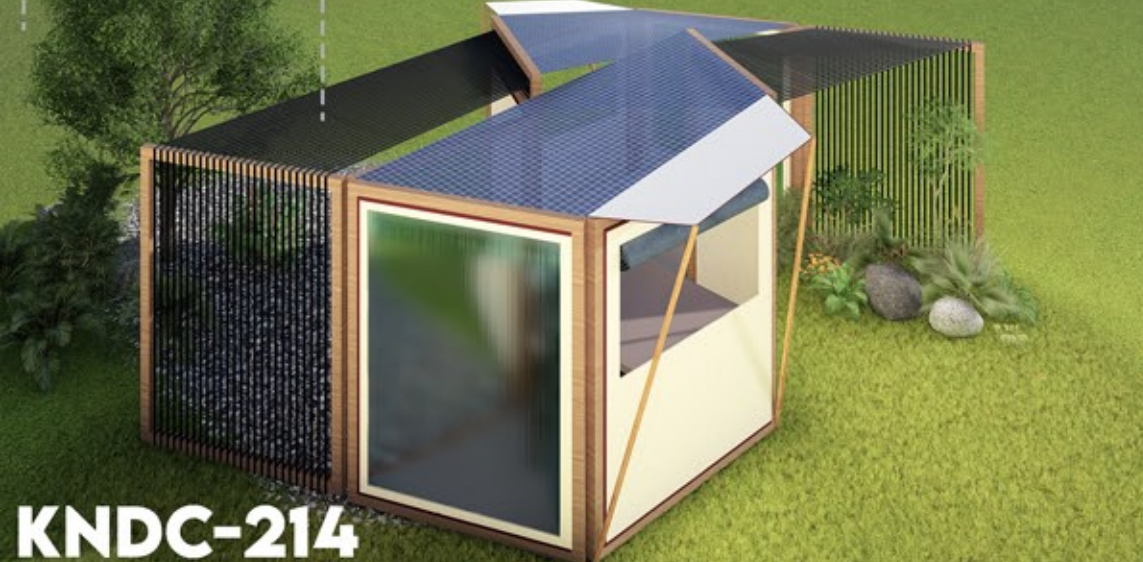
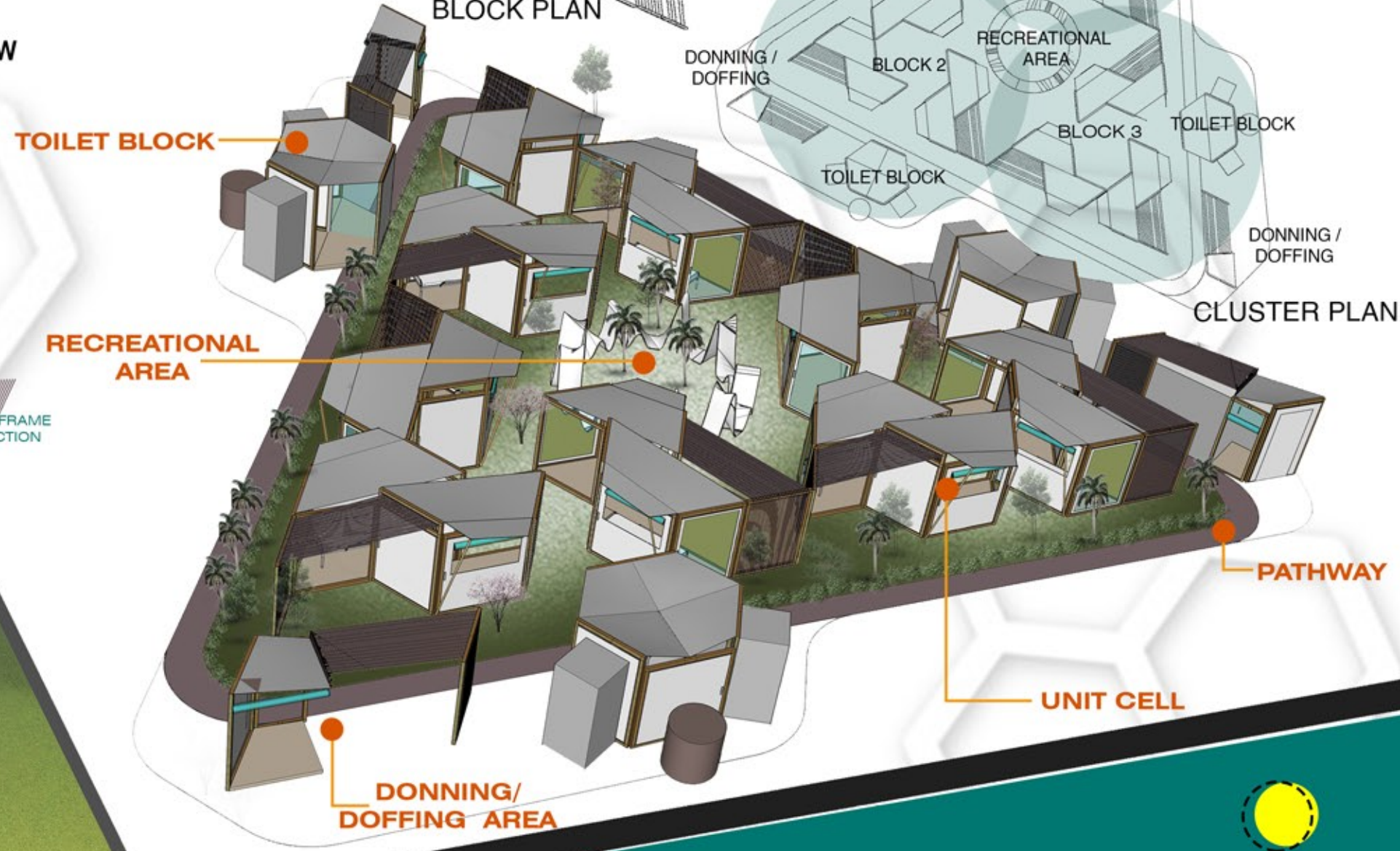
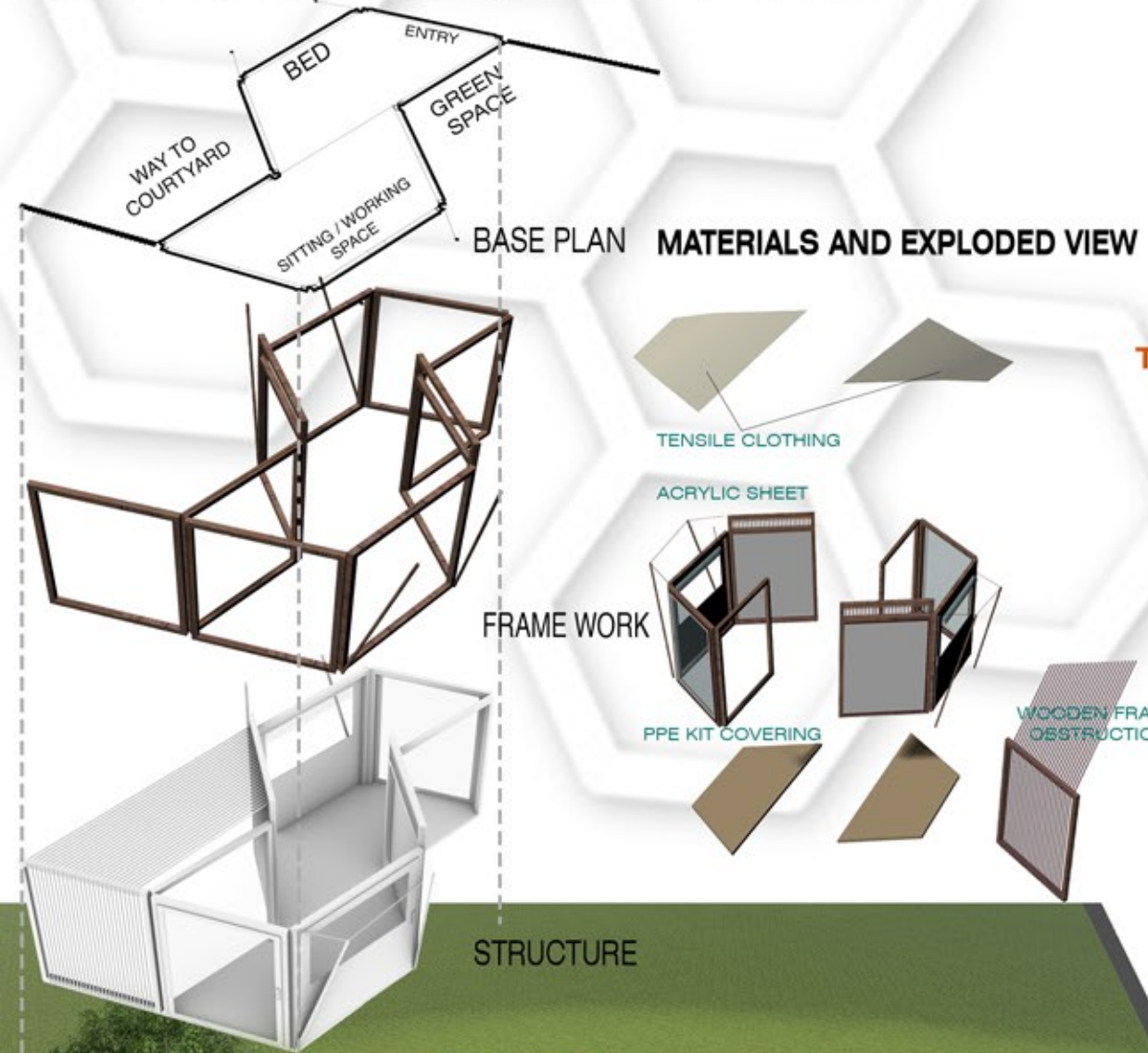
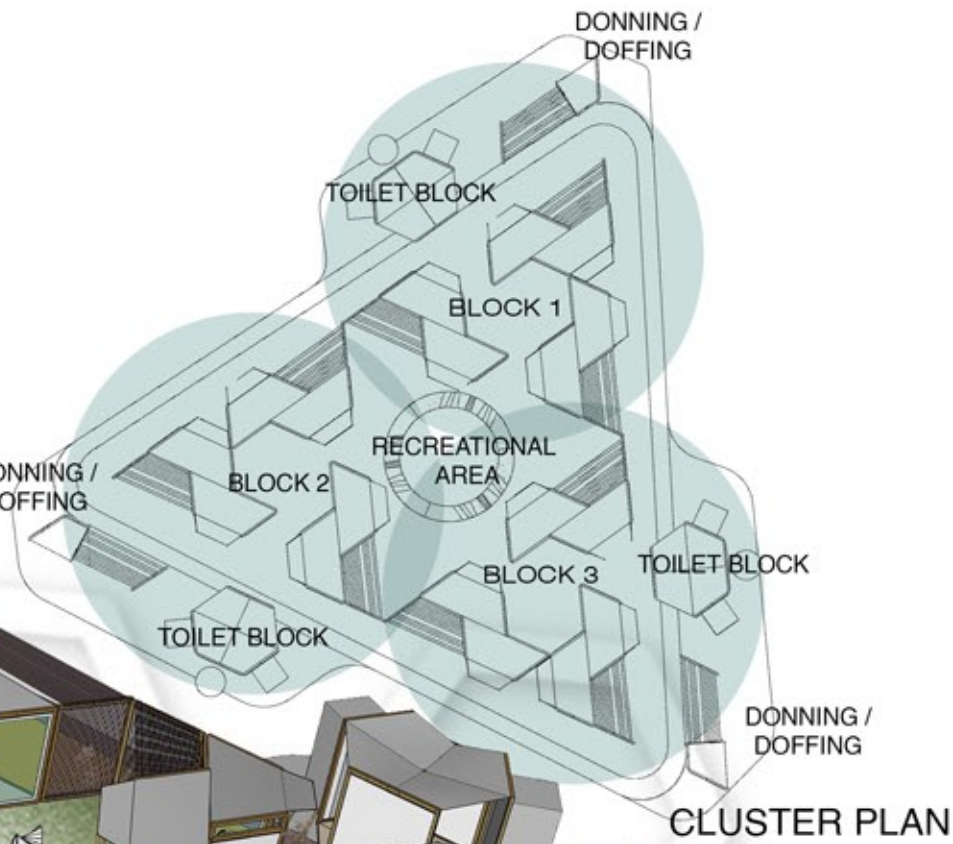
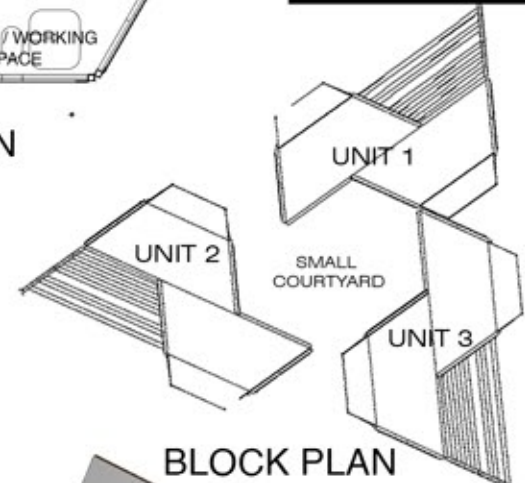
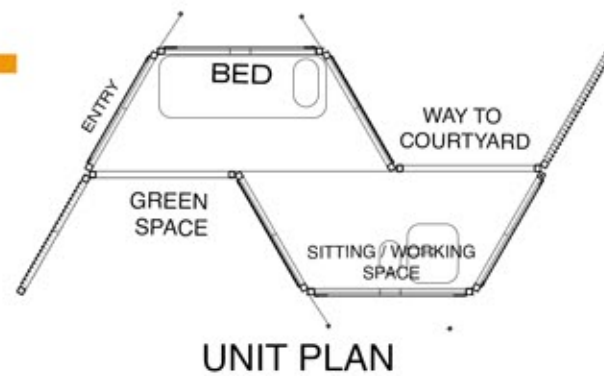
# MODULE DESIGN AND IT FEATURES

FORM OF UNIT CELL IS DERIVED FROM HEXAGON.

ITS DESIGN FEATURES:

1. It is made of the materials on which virus doesn't last on.
2. Cross ventilation and stack effect. Keeping inside cooler.
3. Every unit has private green balcony and has access to small courtyards.
4. Opportunity to socialize in safe environment despite pandemics

CLUSTERS ARE MADE FROM THREE BLOCKS AND EACH BLOCK HAS THREE UNITS. UNITS ARE PLACED IN SUCH A WAY THEY ARE TOGETHER BUT NOT DIRECTLY CONNECTED TO EACH OTHER.



# AMENITIES

## COVID-19 PATIENT'S PERSONAL INDIVIDUAL CELLS

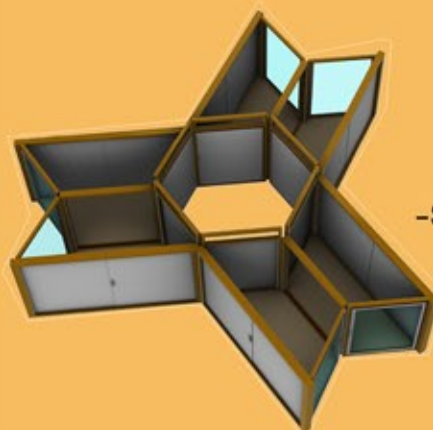


Comprising



-DESIGNED ACCORDING TO VENTILATION AND PROMINENT LIGHTING.  
-CROSS VENTILATION AND STACK EFFECT. KEEPING INSIDE COOLER.

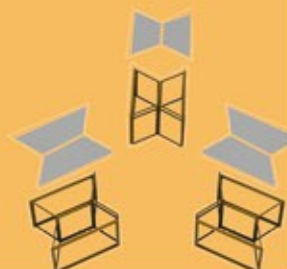
## ON CALL ROOM



Comprising



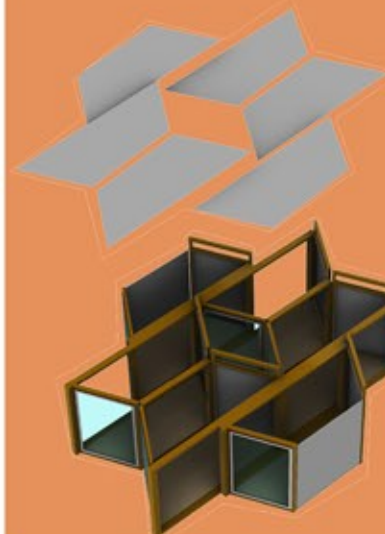
-SPACES AS LOUNGE AREA



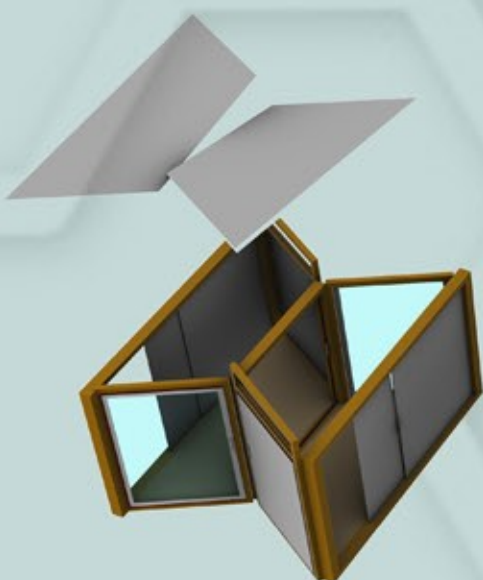
## DONNING AND DOFFING

Comprising

-ACTING AS TRANSITION BETWEEN TWO ACTIVITY SPACES



## EXAMINATION WARDS FOR PATIENTS



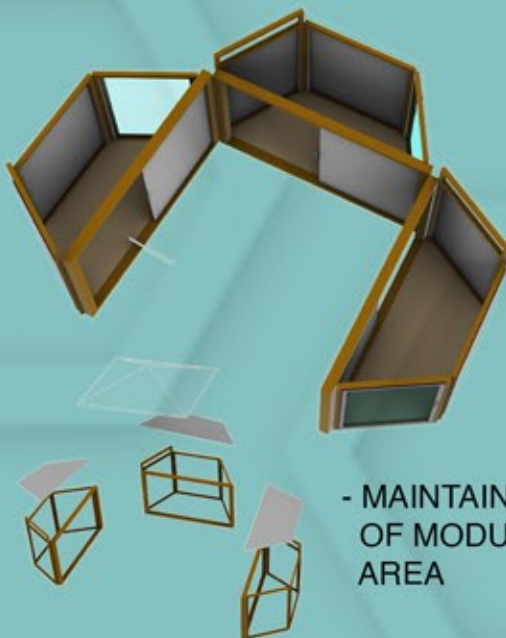
Comprising



- PROVIDING ALTERNATE ROOF FOR SUFFICIENT LIGHTING  
- LINEAR FORM FOR EASE OF SPECIALLY ABLED PEOPLE



## FOOD AND DINING



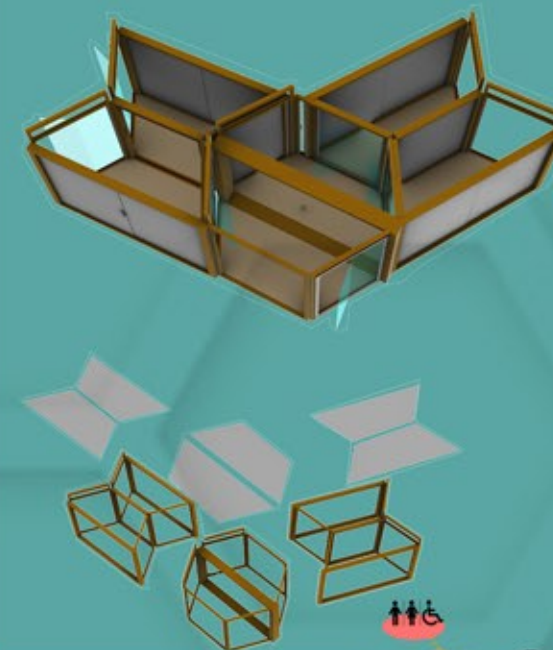
Comprising



- MAINTAINING SIMILAR KIND OF MODULE DESIGN IN THIS AREA

## LAUNDRY SERVICE

Comprising



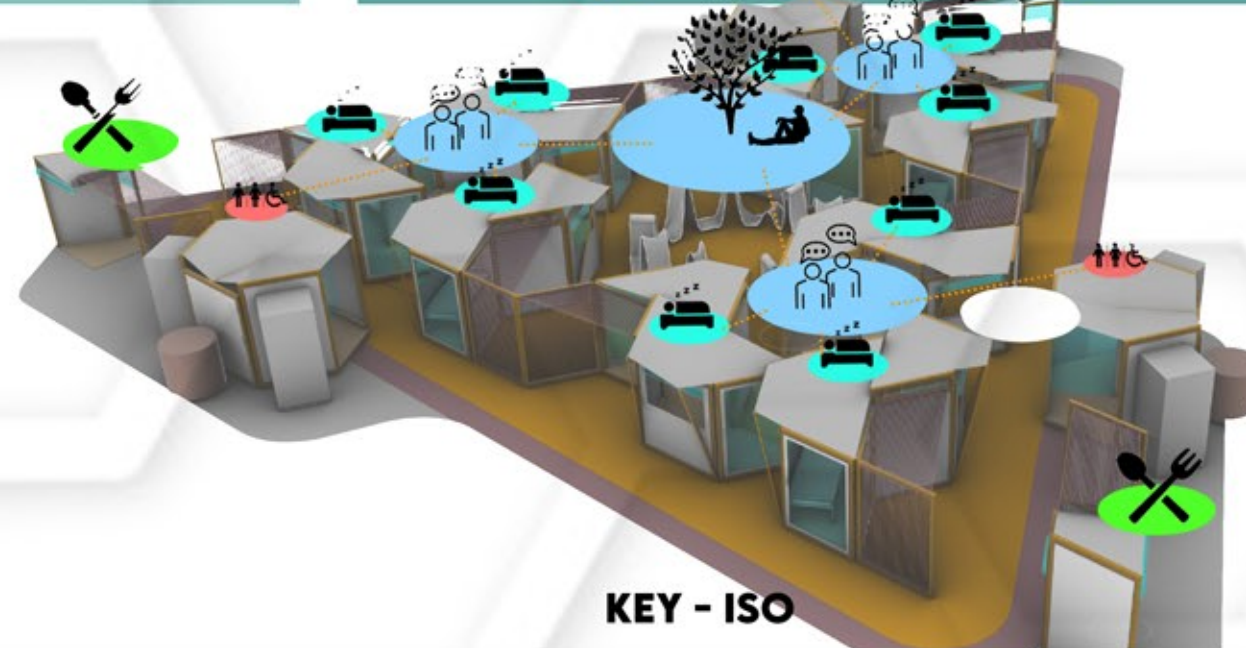
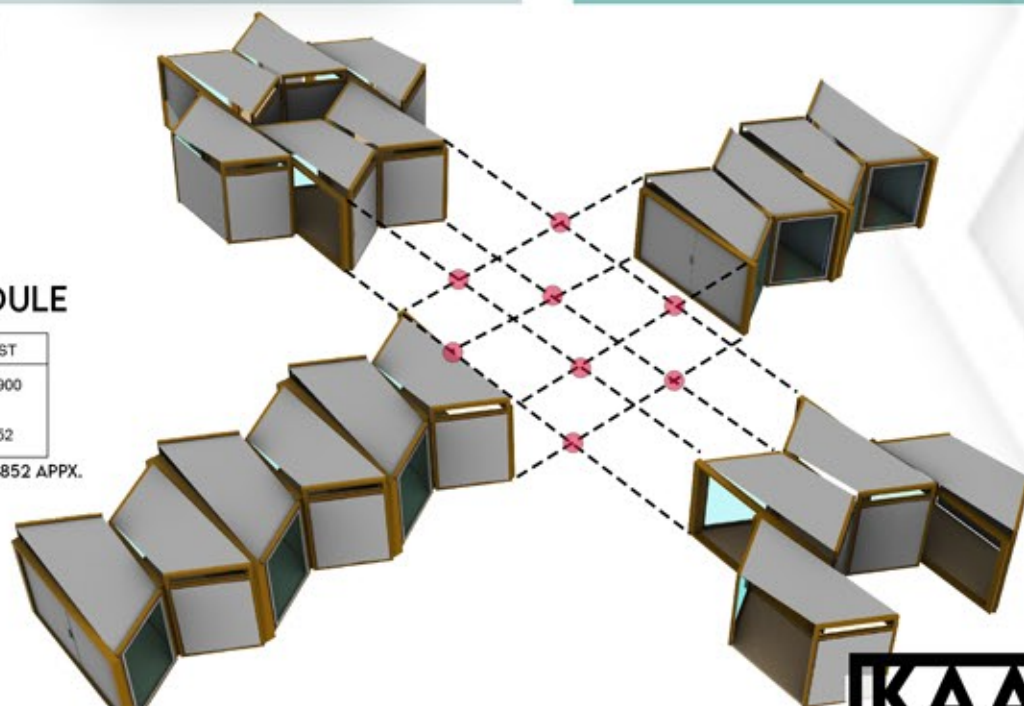
## FLEXIBLE INTEGRATION

You can integrate any space with another space so easily and efficiently with this module

## TENTATIVE COSTING PER MODULE

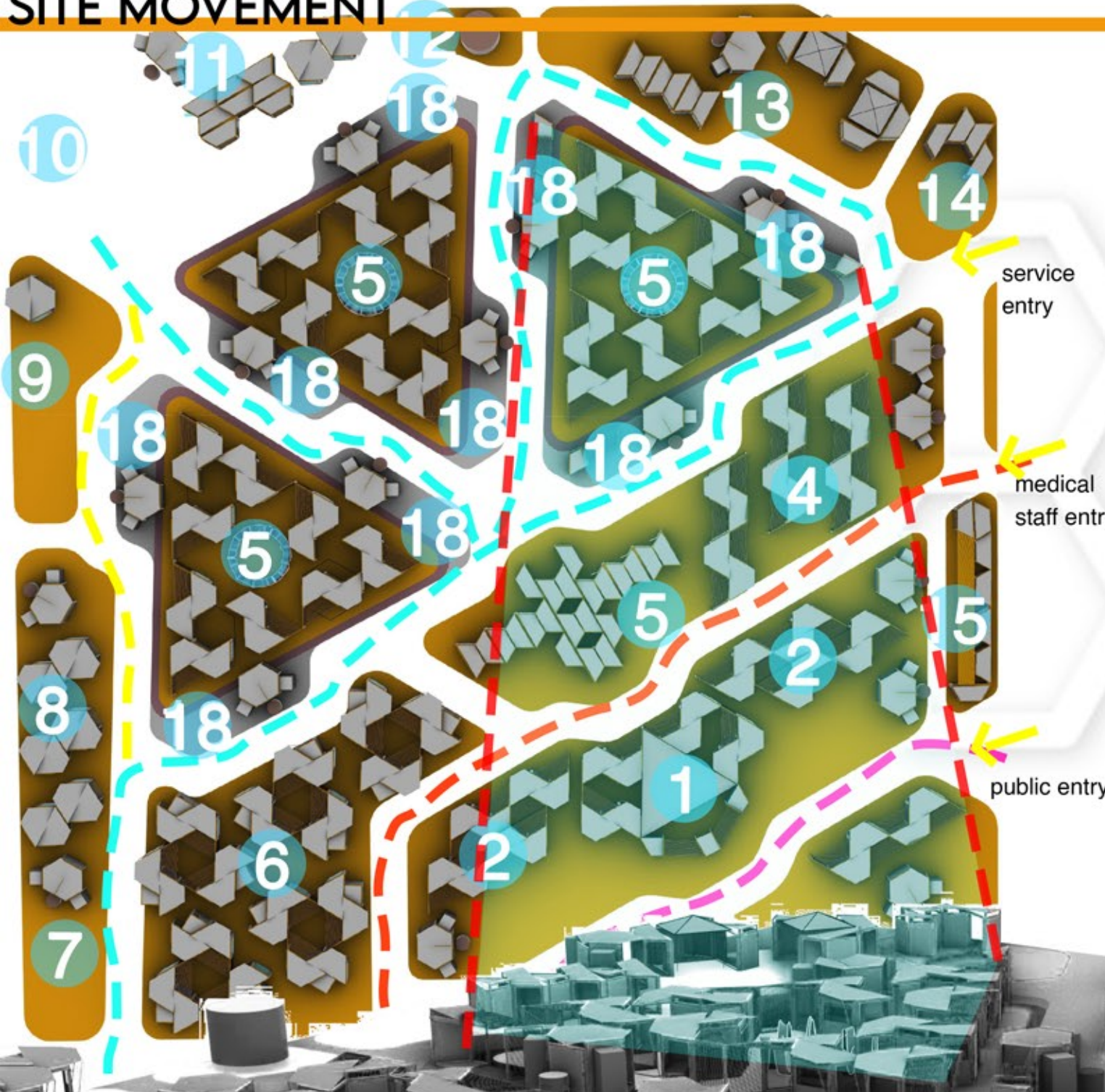
MATERIAL	(no. of pieces)	T.AREA / T.VOL	PRICE(appr.)	COST
Wooden frame	6	3 cubic m	Rs.1300 /cbm	Rs.3900
Pvc Sheet	8	47.6 squ. m	Rs.20 /sqm	Rs.952

TOTAL COST = Rs. 4852 APPX.



KEY - ISO

# SITE MOVEMENT



- 1-Entrance foyer with sanitation zone, thermal check, security check (public)
- 2-Visitors area with pharmacy
- 3-Technical area-donning/doffing area ,examination room,sample testing and storage.
- 4-doctor and staff area with call rooms
- 5-Isolation cluster zone with detached toilet, common recreation area.
- 6-Isolation cluster zone with attached toilet(for severe patients)
- 7-electricity area/solar panelling
- 8-units for service staff
- 9-parking place for vehicle moving inside the centre(centre personal vehicle like ambulance)

- 10-waster decomposition area
- 11-laundry area with staff quarters.
- 12-water supply tank area
- 13-cooking area with storage and area for parking vehicle used for distribution of food with in the centre
- 14-goods loading and unloading area
- 15-dinning area for doctor staff
- 16-cmo cabin and clerical area/administration area
- 17-public/staff parking and future expansion area
- 18-donning and distribution zones (for mild patients)

# SITE SELECTION

As per the priorities the most feasible site will be outskirts of a town or city , as these are near to the major travel assets like airports , railway kents and roadway borders . and as per the concept and formation flexibility our design can be placed anywhere having a large span area irrespective of shape.

# POST PANDEMIC USE

HOMELESS      FESTIVALS

HAZARDS      TOURISM OR CAMPING



**KNDC-214**

**KAARWAN NATIONAL DESIGN COMPETITION**